



## Procedure

1. Start the program Accubid Pro 15
2. Press the CAPS LOCK Key ON
3. From the Job Schedule Screen open the file, Accubid Office Building.
4. If not already selected, select the Takeoff tab at the bottom of the screen.
5. Make sure that the **L100 v8 us neca imp** is the currently selected database. If not, switch to it by clicking on the Database menu and choosing the Select command.
6. Choose Takeoff: TEMPORARY ASSEMBLIES from the Takeoff list.
7. Double click on the first blank line below the Temporary Assembly heading. The Create/Modify Temporary Assembly dialog appears.
8. In the Create/Modify Temporary Assembly make the changes as shown in Figure 2.

- 1 Name: CONNECT OWNER'S 500 KVA
- 2 Using Selection: TEMPORARY ITEM add the Temp Item CONNECT OWNER'S 500 KVA
- 2 Using Selection: ITEM DATABASE add the items shown in Figure 2 (traverse codes are shown)
- 3 Change Fct 1 and Fct 2 as shown in Figure 2
- 4 Click OK

**TEMPORARY ITEM  
ITEM DATABASE**  
13, 6, 21  
4, 11, 2, 21  
4, 11, 2, 18  
4, 11, 2, 25  
4, 11, 2, 19

Item Database: Level 4	Type	Catalog Num	Item Description	Base	Fct 1	Fct 2
1	I	13-3/4X15F	1 CONNECT OWNER'S 500 KVA	Cnt	1.00	1.0
2	I	23-3/4X30F	2 #600 WIRE POWER TERM	Cnt	12.00	1.0
3	I	23-1X30FT	3 3/4" x 66' CODE TAPE - ORG	Cnt	1.00	1.0
4	I	27-3/4X66F	4 3/4" x 66' CODE TAPE - BRN	Cnt	1.00	1.0
5	I	33+SUPER-	5 3/4" x 66' CODE TAPE - YEL	Cnt	1.00	1.0
6	I	70-1X30FT	6 3/4" x 66' CODE TAPE - GRY	Cnt	1.00	1.0
7	I	77-3X20FT	7			
8	I	88-SUPER-3	8			
9	I	130C-3/4X3	9			
10	I	1700-TEMFL	10			
11	I	2200-6-1/2"	11			
12	I	2210-4X10F	12			
13	I	2242-1-1/2"	13			
14	I	2520-1-1/2"	14			
15	I	SCOTCHFIL	15			
16			16			
17	I	35-BLUE-3/4	17			
18	I	35-BROWN-	18			
19	I	35-GRAY-3	19			
20	I	35-GREEN-	20			
21	I	35-ORANG	21			
22	I	35-RED-3/4	22			
23	I	35-VIOLET-	23			
24	I	35-WHITE-3	24			
25	I	35-YELLOW	25			
26			26			
27			27			

Figure 2

9. Using this procedure create the Temporary Assemblies shown on the next pages.

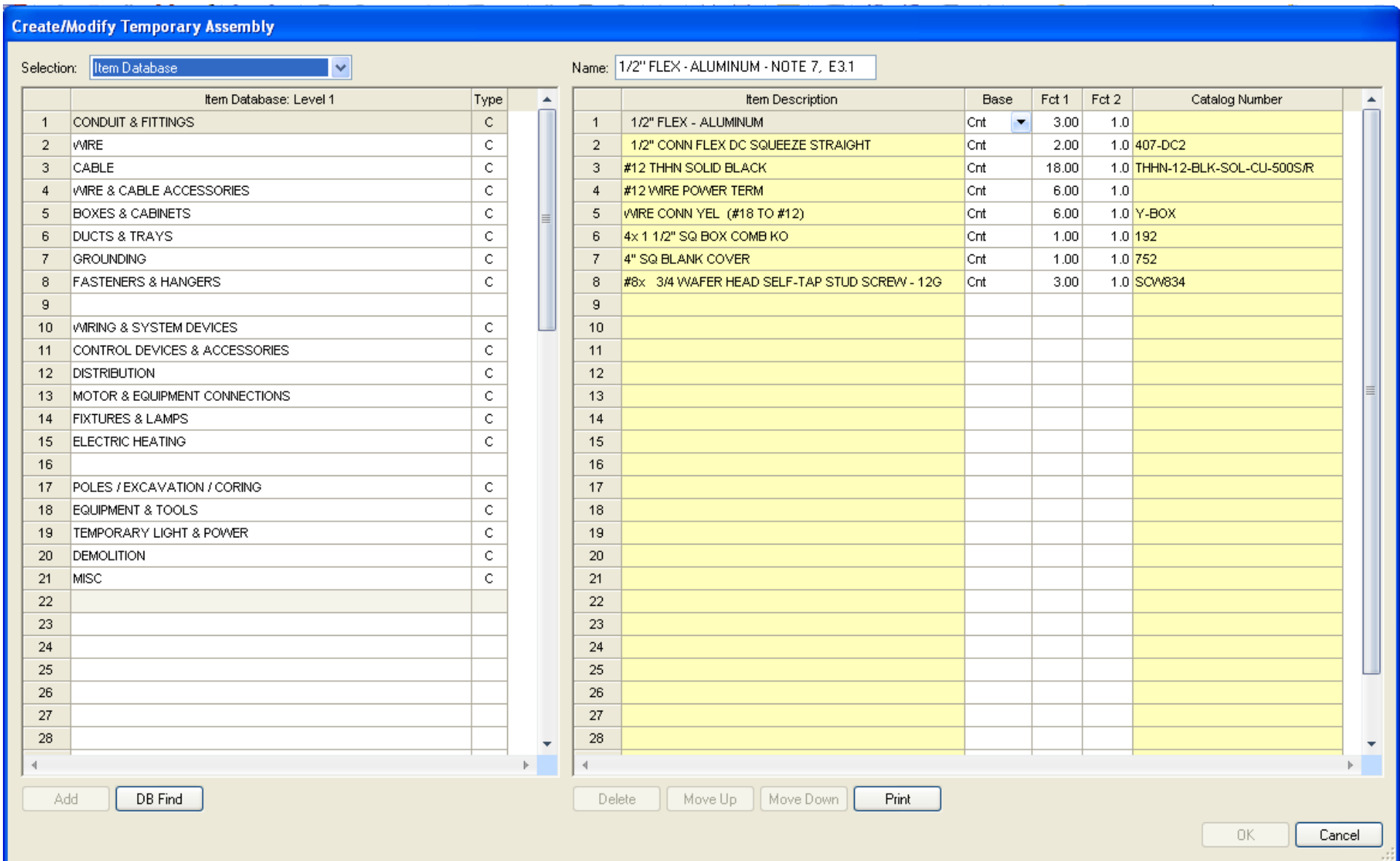


Figure 3

**Create/Modify Temporary Assembly**

Selection:  Name:

Item Database: Level 1		Type	Item Description				Base	Fct 1	Fct 2	Catalog Number
1	CONDUIT & FITTINGS	C	1	PROGRAMMABLE TIME CLOCK A	Cnt	1.00	1.0			
2	WIRE	C	2	#8 TO #10x 7/8 PLAS ANCHOR (3/16)	Cnt	4.00	1.0	7569		
3	CABLE	C	3	#10x 1 P/H SELF-TAP SCREW	Cnt	4.00	1.0			
4	WIRE & CABLE ACCESSORIES	C	4	#10 FLAT WASHER - PLTD STL	Cnt	4.00	1.0	SAE10		
5	BOXES & CABINETS	C	5	1/2" CONDUIT - EMT	Cnt	1.00	1.0			
6	DUCTS & TRAYS	C	6	1/2" CONN SS STL - EMT	Cnt	4.00	1.0			
7	GROUNDING	C	7	#12 THHN SOLID BLACK	Cnt	6.00	1.0	THHN-12-BLK-SOL-CU-500S/R		
8	FASTENERS & HANGERS	C	8	#14 THHN SOLID BLACK	Cnt	6.00	1.0	THHN-14-BLK-SOL-CU-500S/R		
9			9	#12 WIRE POWER TERM	Cnt	3.00	1.0			
10	WIRING & SYSTEM DEVICES	C	10	#14 WIRE CONTROL TERM	Cnt	2.00	1.0			
11	CONTROL DEVICES & ACCESSORIES	C	11							
12	DISTRIBUTION	C	12							
13	MOTOR & EQUIPMENT CONNECTIONS	C	13							
14	FIXTURES & LAMPS	C	14							
15	ELECTRIC HEATING	C	15							
16			16							
17	POLES / EXCAVATION / CORING	C	17							
18	EQUIPMENT & TOOLS	C	18							
19	TEMPORARY LIGHT & POWER	C	19							
20	DEMOLITION	C	20							
21	MISC	C	21							
22			22							
23			23							
24			24							
25			25							
26			26							
27			27							
28			28							

Buttons: Add, DB Find, Delete, Move Up, Move Down, Print, OK, Cancel

Figure 4

**Create/Modify Temporary Assembly**

Selection:  Name:

Item Database: Level 1		Type	Item Description					Base	Fct 1	Fct 2	Catalog Number
1	CONDUIT & FITTINGS	C	1	30A 3P 600V CONTACTOR - NEMA 1	Cnt	2.00	1.0				
2	WIRE	C	2	# 8 WIRE POWER TERM	Cnt	4.00	1.0				
3	CABLE	C	3	#12 WIRE POWER TERM	Cnt	4.00	1.0				
4	WIRE & CABLE ACCESSORIES	C	4	#14 WIRE CONTROL TERM	Cnt	4.00	1.0				
5	BOXES & CABINETS	C	5	WIRE CONN RED (#16 TO #10)	Cnt	5.00	1.0	R-BOX			
6	DUCTS & TRAYS	C	6	WIRE CONN GRY (#14 TO # 8)	Cnt	1.00	1.0	G-BOX			
7	GROUNDING	C	7	#12 THHN BLACK	Cnt	33.00	1.0	THHN-12-BLK-19STR-CU-500S			
8	FASTENERS & HANGERS	C	8	#10x 1 P/H SELF-TAP SCREW	Cnt	10.00	1.0				
9			9	#8 TO #10x 7/8 PLAS ANCHOR (3/16)	Cnt	10.00	1.0	7569			
10	WIRING & SYSTEM DEVICES	C	10	#10 FLAT WASHER - PLTD STL	Cnt	10.00	1.0	SAE10			
11	CONTROL DEVICES & ACCESSORIES	C	11	1/2" CONDUIT - EMT	Cnt	10.00	1.0				
12	DISTRIBUTION	C	12	1/2" COUPLING SS STL - EMT	Cnt		10.0				
13	MOTOR & EQUIPMENT CONNECTIONS	C	13	1/2" CONN SS STL - EMT	Cnt	2.00	1.0				
14	FIXTURES & LAMPS	C	14	1/2" 1-H STRAP - EMT - STEEL	Cnt	2.00	1.0				
15	ELECTRIC HEATING	C	15	1/2" SLEEVE & SEAL	Cnt	1.00	1.0				
16			16								
17	POLES / EXCAVATION / CORING	C	17								
18	EQUIPMENT & TOOLS	C	18								
19	TEMPORARY LIGHT & POWER	C	19								
20	DEMOLITION	C	20								
21	MISC	C	21								
22			22								
23			23								
24			24								
25			25								
26			26								
27			27								
28			28								

Buttons: Add, DB Find, Delete, Move Up, Move Down, Print, OK, Cancel

Figure 5

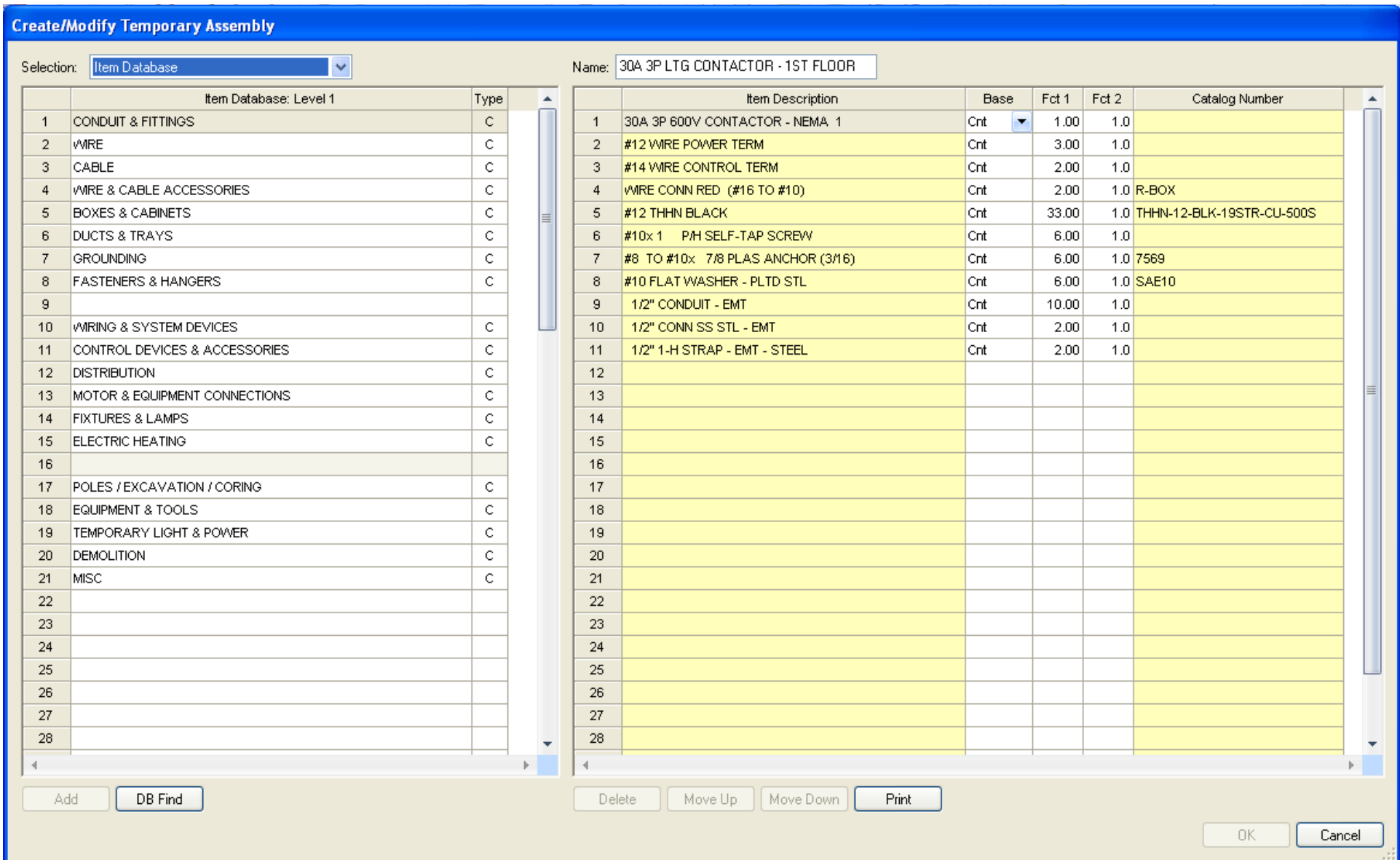


Figure 6

When completed the following should display in the Takeoff: TEMPORARY ASSEMBLIES list.

Takeoff: TEMPORARY ASSEMBLIES	
	Temporary Assembly
1	CONNECT OWNER'S 500 KVA
2	1/2" FLEX - ALUMINUM - NOTE 7, E3.1
3	PROGRAMMABLE TIME CLOCK - LTG CONTROL
4	30A 3P LTG CONTACTORS - BSMT
5	30A 3P LTG CONTACTOR - 1ST FLOOR
6	

Figure 7

10. Save your estimate.